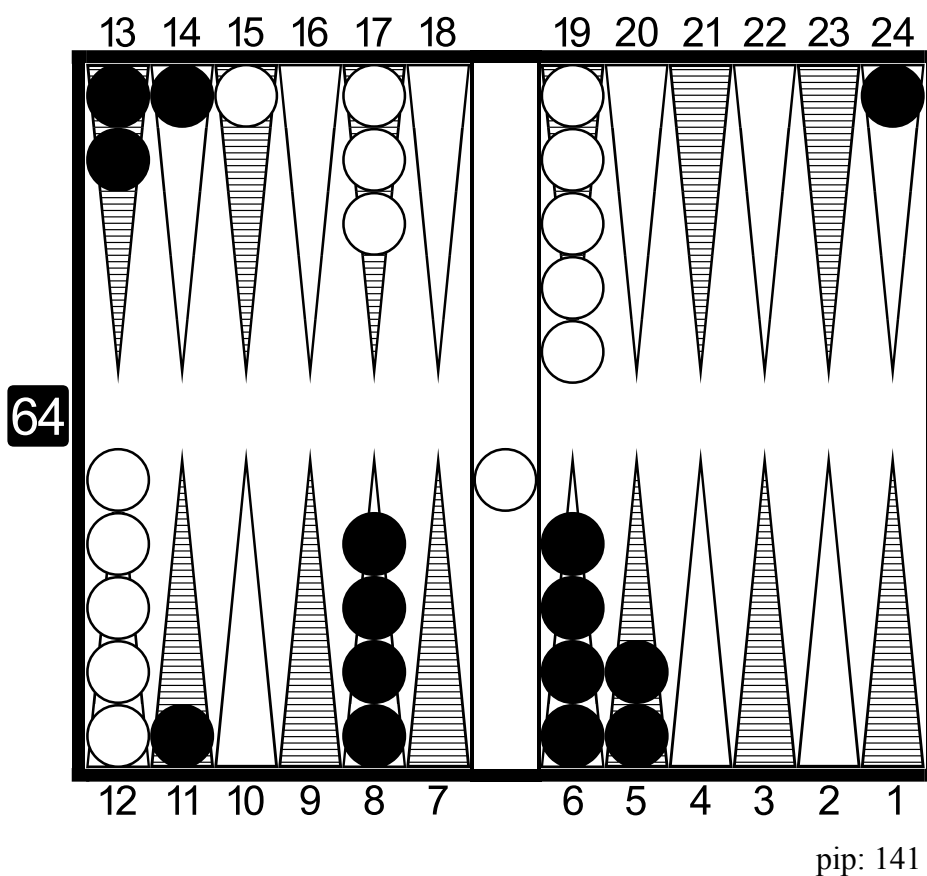


## Problem 44

Unlimited game

pip: 154

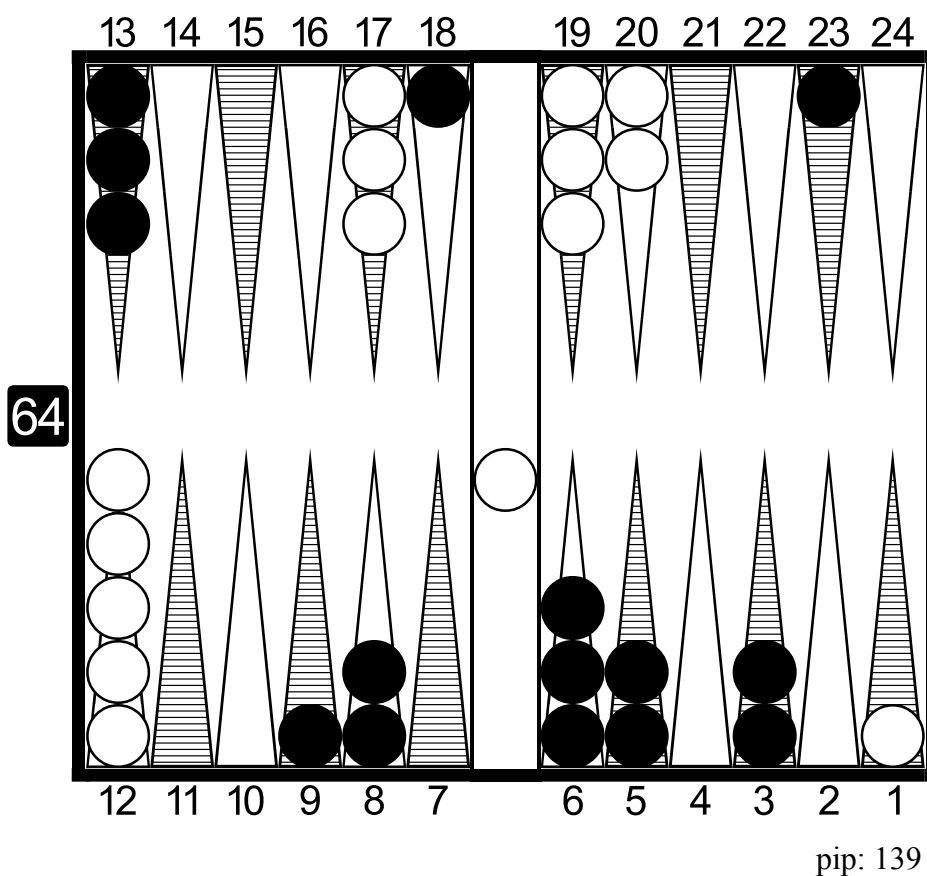


Analyzed in Rollout	No double	Double/Take
Player Winning Chances:	71.47% (G:24.32% B:0.59%)	71.63% (G:26.19% B:0.65%)
Opponent Winning Chances:	28.53% (G:4.45% B:0.16%)	28.37% (G:4.92% B:0.21%)
Cubeless Equities	+0.632	+1.299
<b>Cubeful Equities</b>		
No double:	+0.874 (-0.126)	±0.015 (+0.859..+0.889)
Double/Take:	+1.076 (+0.076)	±0.022 (+1.054..+1.099)
Double/Pass:	+1.000	
<b>Best Cube action: Double / Pass</b>		
<b>Rollout details</b>		
648 Games rolled with Variance Reduction.		
Moves: 3-ply, cube decisions: XG Roller		
Double Decision confidence:		100.0%
Take Decision confidence:		100.0%
Duration: 6 minutes 44 seconds		

# Problem 226

Unlimited game

pip: 166



Analyzed in Rollout	No double	Double/Take
Player Winning Chances:	68.37% (G:27.97% B:1.09%)	68.50% (G:30.14% B:1.10%)
Opponent Winning Chances:	31.63% (G:6.23% B:0.28%)	31.50% (G:6.64% B:0.33%)
Cubeless Equities	+0.593	+1.225
<b>Cubeful Equities</b>		
No double:	+0.822 (-0.155)	±0.009 (+0.813..+0.830)
Double/Take:	+0.977	±0.013 (+0.964..+0.989)
Double/Pass:	+1.000 (+0.023)	

Best Cube action: Double / Take

### Rollout details

2592 Games rolled with Variance Reduction.

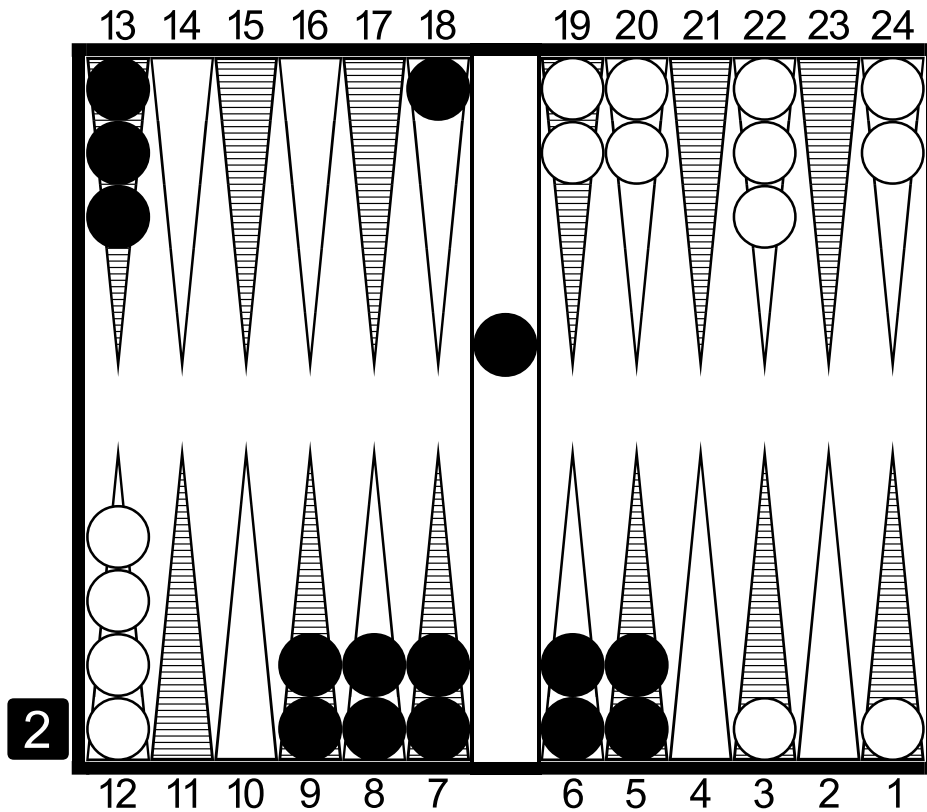
Moves: 3-ply, cube decisions: XG Roller

Double Decision confidence:	100.0%
Take Decision confidence:	100.0%
Duration: 27 minutes 17 seconds	

# Problem 362

Unlimited game

pip: 131



pip: 152

Analyzed in Rollout	No redouble	Redouble/Take
Player Winning Chances:	67.69% (G:15.94% B:0.68%)	67.93% (G:16.18% B:0.82%)
Opponent Winning Chances:	32.31% (G:14.34% B:0.09%)	32.07% (G:14.19% B:0.14%)
Cubeless Equities	+0.376	+0.771
Cubeful Equities		
No redouble:	+0.687	±0.020 (+0.668..+0.707)
Redouble/Take:	+0.559 (-0.129)	±0.037 (+0.522..+0.595)
Redouble/Pass:	+1.000 (+0.313)	

Best Cube action: No redouble / Take

Percentage of wrong pass needed to make the double decision right: 22.6%

### Rollout details

648 Games rolled with Variance Reduction.

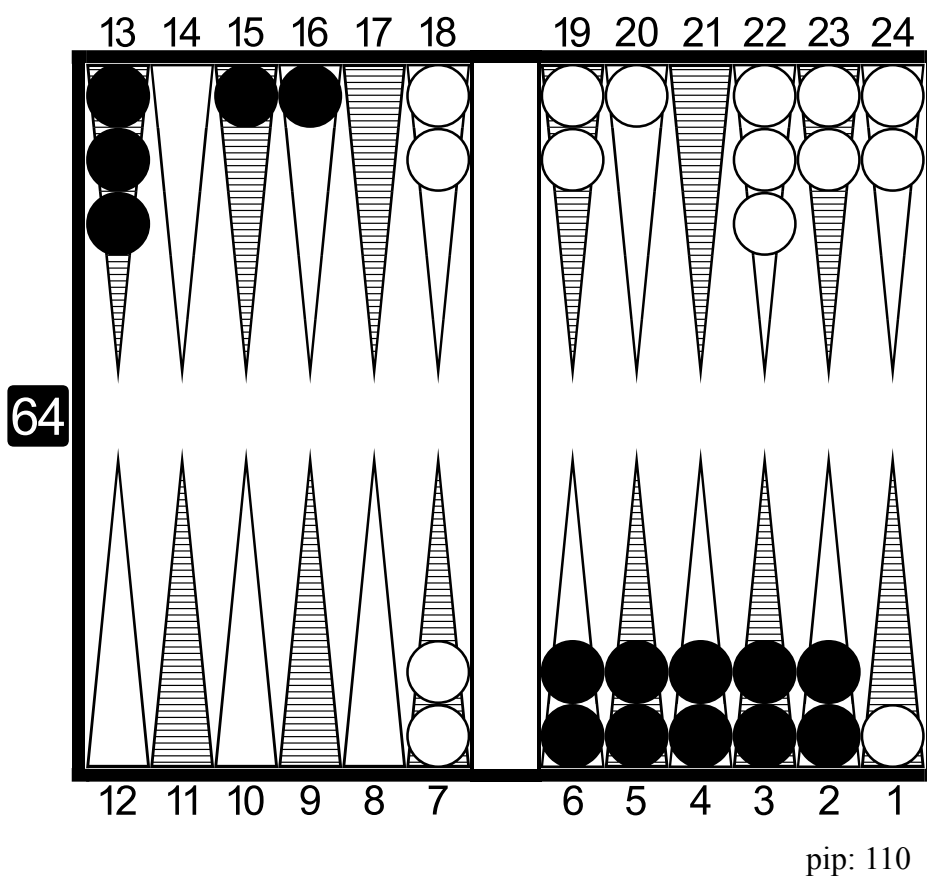
Moves: 3-ply, cube decisions: XG Roller

Double Decision confidence:	100.0%
Take Decision confidence:	100.0%
Duration: 6 minutes 34 seconds	

## Problem 622

Unlimited game

pip: 106

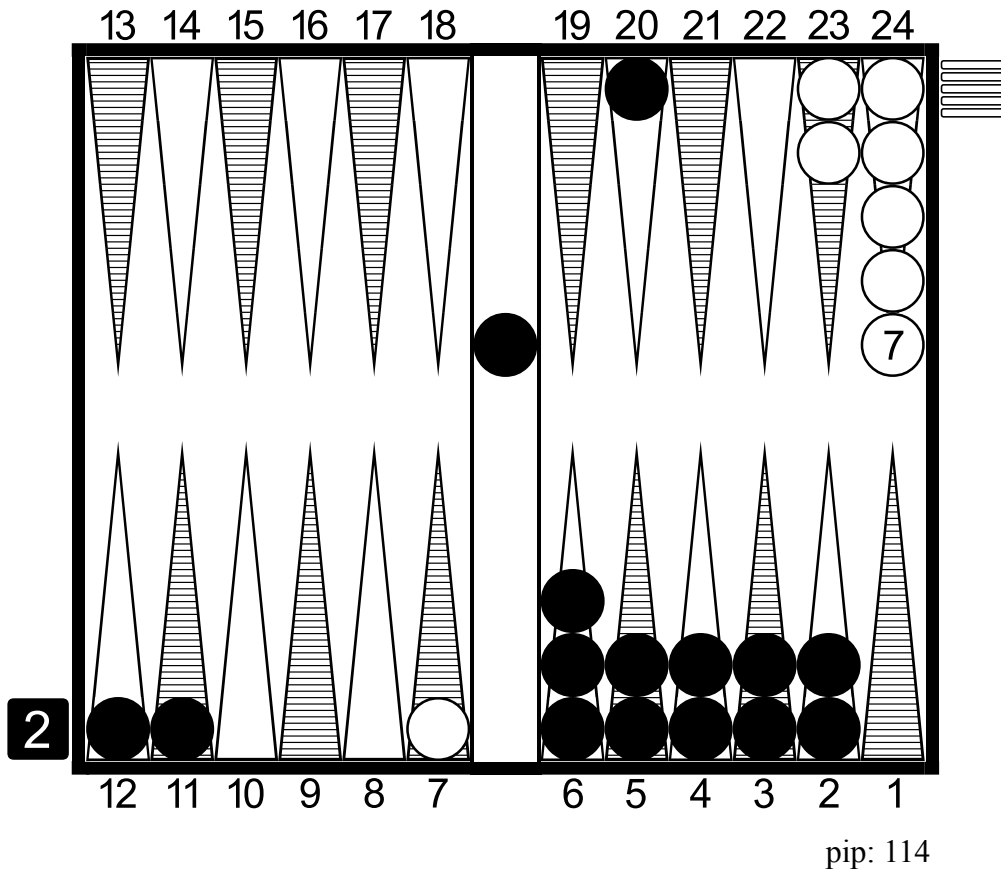


Analyzed in Rollout	No double	Double/Take
Player Winning Chances:	70.36% (G:18.55% B:0.71%)	70.62% (G:19.59% B:0.86%)
Opponent Winning Chances:	29.64% (G:3.86% B:0.05%)	29.38% (G:4.09% B:0.05%)
Cubeless Equities	+0.561	+1.151
<b>Cubeful Equities</b>		
No double:	+0.772 (-0.174)	±0.009 (+0.763..+0.781)
Double/Take:	+0.946	±0.012 (+0.934..+0.958)
Double/Pass:	+1.000 (+0.054)	
<b>Best Cube action: Double / Take</b>		
<b>Rollout details</b>		
1296 Games rolled with Variance Reduction.		
Moves: 3-ply, cube decisions: XG Roller		
Double Decision confidence:	100.0%	
Take Decision confidence:	100.0%	
Duration: 3 minutes 59 seconds		

# Problem 806

Unlimited game

(5 checkers off) pip: 29



pip: 114

Analyzed in Rollout	No redouble	Redouble/Take
Player Winning Chances:	50.86% (G:0.00% B:0.00%)	50.83% (G:0.00% B:0.00%)
Opponent Winning Chances:	49.14% (G:24.26% B:0.26%)	49.17% (G:24.15% B:0.26%)
Cubeless Equities	-0.228	-0.455
Cubeful Equities		
No redouble:	+0.040	±0.007 (+0.033..+0.048)
Redouble/Beaver:	-1.398 (-1.439)	±0.030 (-1.428..-1.368)
Redouble/Pass:	+1.000 (+0.960)	

Best Cube action: No redouble / Beaver

Percentage of wrong pass needed to make the double decision right: 37.5%

### Rollout details

1296 Games rolled with Variance Reduction.

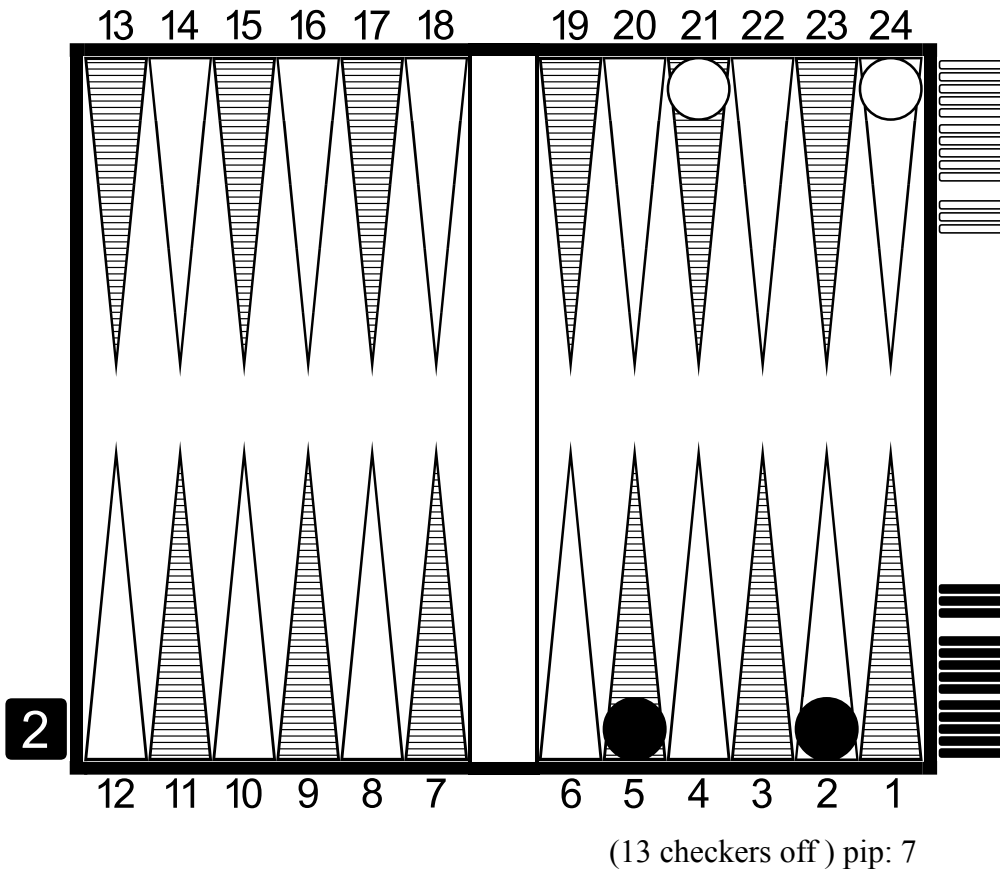
Moves: 3-ply, cube decisions: XG Roller

Double Decision confidence:	100.0%
Take Decision confidence:	100.0%
Duration: 1 minute 47 seconds	

# Problem 987

Unlimited game

(13 checkers off) pip: 5



Analyzed in Rollout	No redouble	Redouble/Take
Player Winning Chances:	61.90% (G:0.00% B:0.00%)	61.90% (G:0.00% B:0.00%)
Opponent Winning Chances:	38.10% (G:0.00% B:0.00%)	38.10% (G:0.00% B:0.00%)
Cubeless Equities	+0.238	+0.476
<b>Cubeful Equities</b>		
No redouble:	+0.239	±0.000 (+0.239..+0.239)
Redouble/Take:	+0.111 (-0.128)	±0.000 (+0.111..+0.111)
Redouble/Pass:	+1.000 (+0.761)	

Best Cube action: No redouble / Take

Percentage of wrong pass needed to make the double decision right: 12.6%

### Rollout details

1296 Games rolled with Variance Reduction.

Moves: 3-ply, cube decisions: XG Roller

Double Decision confidence:	100.0%
Take Decision confidence:	100.0%
Duration: 0.1 second	